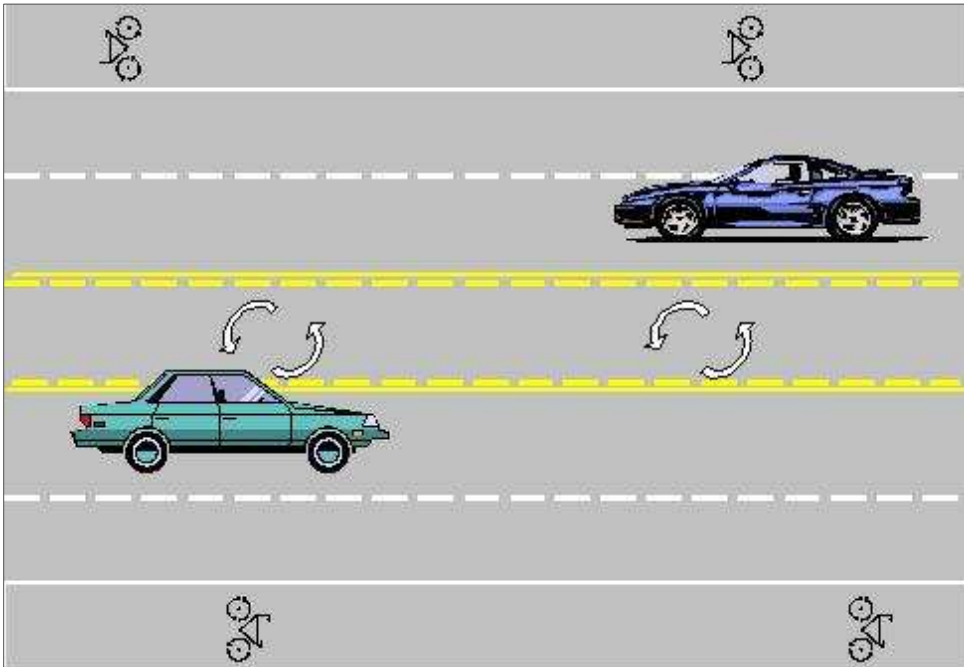


Plan Recommendations:

Access Management, Alternative #1



Alternative #1 (Existing)

- Continuous two-way left turn lane
- No change to existing travel and turn lanes

Pros:

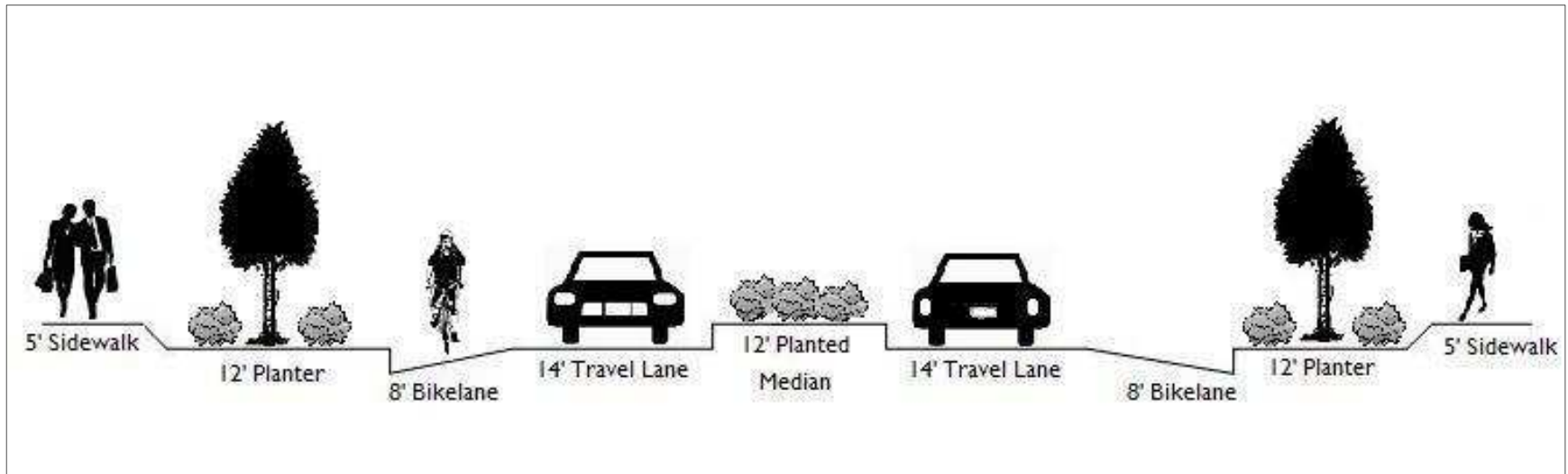
- Center turn lane helps traffic flow
- Adequate storage for turning vehicles

Cons:

- Frequent interference with traffic flow
- Possibility for head-on collisions
- No pedestrian 'refuge' area

Plan Recommendations:

Access Management, Alternative #2



Alternative #2 (Boulevard)

- One 14' wide travel lane in each direction
- 12' wide continuous landscaped median
- 8' wide bike lanes (expand on both sides)
- 5' sidewalks (both sides)
- 12' planter strips next to sidewalks

Pros:

- Lower chance of head-on collision
- Increased walkability
- More accessible for bikes
- Improved aesthetics

Cons:

- Increased congestion
- Back-up by left turn moves
- May need U-turns at intersections
- Bottleneck where two lanes merge

Recommendations:

Access Management, Alternative #3



Alternative #3 (Planted Medians)

- 12 locations with least impact on businesses
- Adequate clearance will be provided for left-turning vehicles

Pros:

- Lower chance of head-on collision
- Increased walkability
- Provides pedestrian 'refuge'
- Improved aesthetics

Cons:

- May cause back-up
- May reduce access to some businesses